



SENES Consultants

an  ARCADIS company

Paying Greater Attention to Public Support in Developing Nuclear Projects

*Rosatom's VII International Forum Atom-Eco 2013
Roundtable: "Environmental safety and public acceptance"
30-31 October 2013, Moscow, Russia*

Sylvain Saint-Pierre, VP Marketing, Energy and Nuclear
ssaintpierre@senesuk.com



Outline

- ❖ Public support
- ❖ Regulatory project licensing
- ❖ Leading-edge standardized environmental protection



Public Support

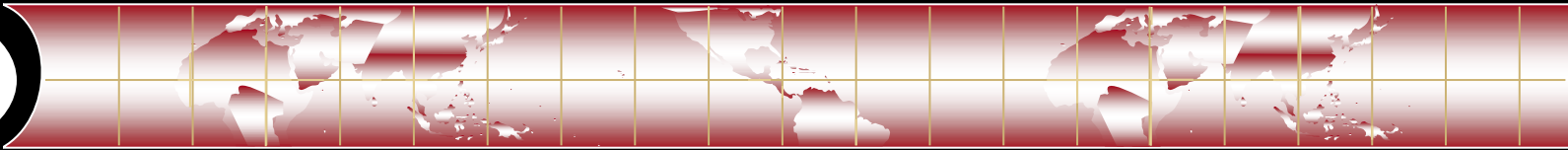
❖ From country-wide support ...



ROSATOM



POCATOM



Public Support

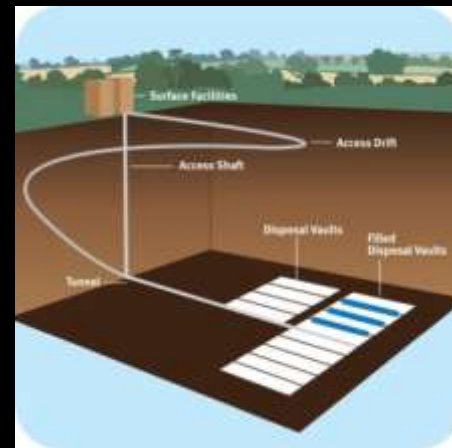
❖To project-specific support



New build



Transport & storage



Disposal

A GOLD Medal target for Russia





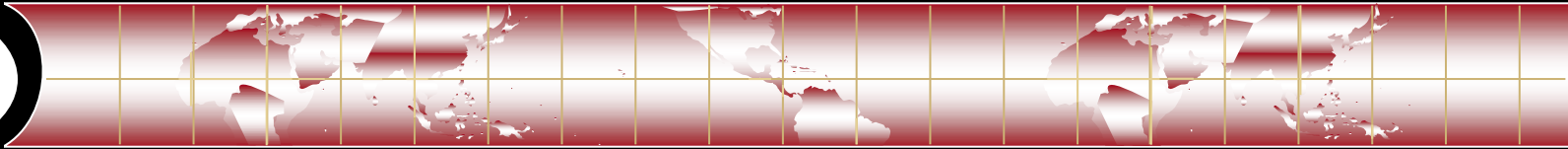
Public Support

- ❖ How to further progress on project-specific support?
 - ❖ **Seek, gain and maintain public support** and account for it (integrating societal dimensions)
 - ❖ **Process** , which accounts for justified options, that is as important as **Solutions** – publically irreproachable
 - ❖ Process is **external** (public outreach) and **internal** (senior management) procedures that examine options free of taboo



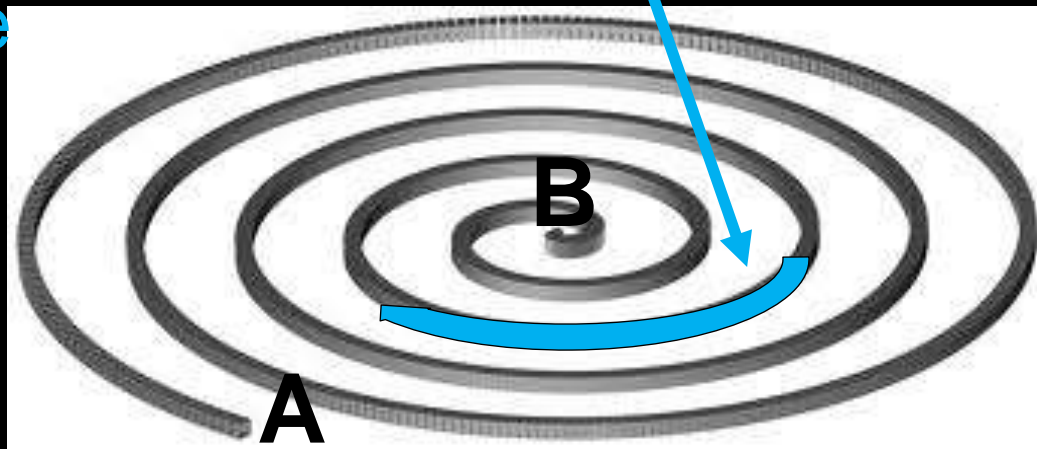
Public Support

- ❖ Some key “ingredients” include
 - ❖ Sound safety and environmental protection
 - ❖ Socio-economic benefits
 - ❖ Innovative and attractive solutions
 - ❖ Consider appealing options for architecturally-based infrastructures and landscapes, parks and leisure areas, etc.
- ❖ Process+Ingredients should lead to a well supported “social-economical-environmental” public agreement



Project Regulatory Licensing

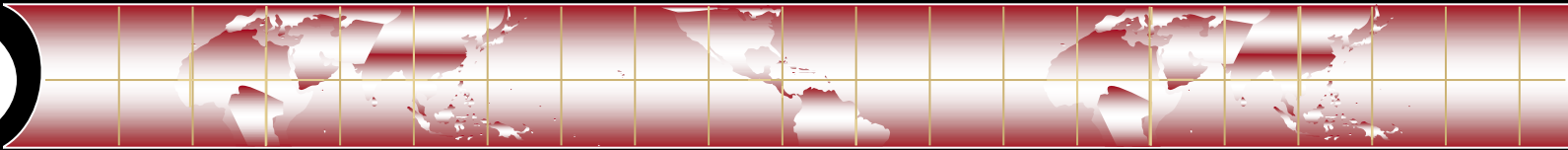
- ❖ Building on a broader approach that led to a well supported public agreement...
- ❖ Project regulatory licensing addresses compatibility with requirements, contributing to enhance public confidence





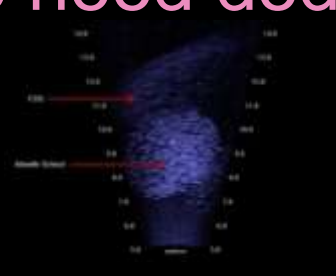
Project Regulatory Licensing

- ❖ Adaptation to the local context is important
 - ❖ If it is insufficient, it may create delays or even roadblocks
 - ❖ If it is too pronounced, it may result in inefficient operations
- ❖ A suitable balance must be struck between local adaptation and standardization – for example:
 - 80 to 90 % standardization
 - +
 - 10 to 20% local adaptation



Leading-Edge Standardized Environmental Protection

- ❖ Expectations rank high for sound designs and practices and related continued improvements that address various risks
 - ❖ safety, environment, radiation, chemical, waste,... over 60 years+
- ❖ Specialised situations also need dedicated attention





Leading-Edge Standardized Environmental Protection

❖ Pay more attention to a broader range of more common environmental risks and nuisances for the public

❖ Disturbance of landscape & conventional uses, traffic, noise, visual



❖ For context, consider Moscow's metro





SENE as part of the ARCADIS Group

- ❖ A global engineering and consultancy group which consists of over 22,000 professionals
- ❖ Offers global, integrated and innovative solutions which often balance needs related to:
 - ❖ Infrastructures, Water, Environment and Buildings
- ❖ With an efficient dedication to help clients address public support as part of project development



Thank you for your attention

Questions?

Sylvain Saint-Pierre
VP Marketing, Energy and Nuclear
SENE Consultants Limited
ssaintpierre@senesuk.com